

Must be used under medical supervision



# PHENYLADE® GMP DRINK MIX

A low-phenylalanine, powdered medical food containing a balanced mix of glycomacropeptide (GMP), essential and non-essential amino acids, carbohydrates (including fiber), fat (including DHA), vitamins, minerals and trace elements.

**Indication:** Phenylketonuria  
Suitable for individuals over 1 years of age.

## Nutrition Information:

Nutrients	Per 100 g of powder	Per 33.3 g Powder (1 pouch or scoop)
Calories	354	118
Protein Equivalent, g	30.0	10.0
Phenylalanine, mg	54.0	18.0
Fat, g	9.4	3.1
Saturated, g	4.0	1.3
<i>Trans</i> , g	0	0
Monounsaturated, g	3.5	1.2
Polyunsaturated, g	1.7	0.6
DHA, mg	130	43.3
Carbohydrate, g	39.6	13.2
Fiber, g	4.5	1.5
<b>Amino Acids, g</b>		
L-Alanine	1.33	0.44
L-Arginine	1.42	0.47
L-Asparagine	1.89	0.63
L-Cystine	0.93	0.31
L-Glutamic Acid	4.14	1.38
L-Glycine	2.24	0.75
L-Histidine	1.47	0.49
L-Isoleucine	2.27	0.76
L-Leucine	2.34	0.78
L-Lysine	1.33	0.44
L-Methionine	0.44	0.15
L-Phenylalanine	0.054	0.018
L-Proline	2.57	0.86
L-Serine	1.63	0.54
L-Threonine	3.68	1.23
L-Tryptophan	0.71	0.24
L-Tyrosine	3.69	1.23
L-Valine	1.83	0.61
L-Carnitine	0.04	0.01
Taurine	0.09	0.03

Vitamins	Per 100 g of powder	Per 33.3 g Powder (1 pouch or scoop)
Vitamin A, IU (mcg RE)	2040 (765)	680 (255)
Vitamin D <sub>3</sub> , IU (mcg)	900 (22.5)	300 (7.5)
Vitamin E, IU (mg α-TE)	22.8 (15.2)	7.6 (5.1)
Vitamin K, mcg	72.0	24.0
Thiamine, mg	1.4	0.47
Riboflavin, mg	1.8	0.60
Vitamin B <sub>6</sub> , mg	1.7	0.56
Vitamin B <sub>12</sub> , mcg	3.6	1.2
Niacin, mg	15.0	5.0
Folic Acid, mcg	360	120
Pantothenic Acid, mg	4.8	1.6
Biotin, mcg	36.0	12.0
Vitamin C, mg	72.0	24.0
Choline, mg	300	100
Inositol, mg	60.0	20.0
<b>Minerals</b>		
Calcium, mg	1050	350
Phosphorus, mg	945	315
Magnesium, mg	252	84.0
Iron, mg	13.2	4.4
Zinc, mg	10.2	3.4
Manganese, mg	1.6	0.52
Copper, mcg	1200	400
Iodine, mcg	135	45.0
Molybdenum, mcg	54.0	18.0
Chromium, mcg	36.0	12.0
Selenium, mcg	48.0	16.0
Sodium, mg	564	188
Potassium, mg	1047	349
Chloride, mg	570	190

# Ordering/Reimbursement Information for PhenylAde® GMP Drink Mix:

Product Code	Reimbursement Code	HCPCS Code*	Product Packaging	Calories Per Can
182486 - Plain Cans	49735-0100-75	B4162 or B4157	4 x 375 g (13.2 oz)	1451
114098 - Vanilla Cans	49735-0168-32	B4162 or B4157	4 x 400 g (14.1 oz)	1584
114116 - Plain Pouches	49735-0141-16	B4157 or B4162	16 x 33.3 g (1.2 oz)	129
114099 - Vanilla Pouches	49735-0183-04	B4157 or B4162	16 x 33.3 g (1.2 oz)	132

\* S9435 = For individuals who submit their bills to insurance on their own.

## Ingredients:

**Plain:** Glycomacropeptide (Milk), Maltodextrin, Corn Syrup Solids, Refined Vegetable Oils (Canola, Medium Chain Triglycerides (Coconut And/Or Palm Kernel), High Oleic Sunflower, Sunflower), Dextrin, L-Tyrosine, Tricalcium Phosphate, Glycine, Magnesium Phosphate, L-Leucine, L-Histidine, L-Arginine, DHA Powder (Corn Syrup Solids, *C. Cohnii* Oil\*, Modified Corn Starch, Mannitol, High Oleic Sunflower Oil, Sodium Ascorbate, Mono- And Diglycerides, Sodium Polyphosphate, Tricalcium Phosphate, Natural Flavors, Mixed Tocopherols, Sunflower Lecithin, Ascorbyl Palmitate), Sugar, Potassium Chloride, L-Cystine, Choline Bitartrate, Dicalcium Phosphate, L-Tryptophan, Citric Acid Esters Of Mono- And Diglycerides (CITREM), Potassium Citrate, Silicon Dioxide, Sodium Chloride, Ascorbic Acid, Taurine, Inositol, Vitamin E Acetate, Ferrous Sulfate, L-Carnitine, Sunflower Lecithin, Niacinamide, Zinc Oxide, Vitamin D<sub>3</sub>, Copper Gluconate, Vitamin A Palmitate, Calcium D-Pantothenate, Manganese Sulfate, D-Biotin, Beta-Carotene, Thiamine Hydrochloride, Pyridoxine Hydrochloride, Potassium Iodide, Riboflavin, Vitamin K<sub>1</sub>, Sodium Selenite, Folic Acid, Vitamin B<sub>12</sub>, Chromium Chloride, Sodium Molybdate.

**Contains: Milk.**

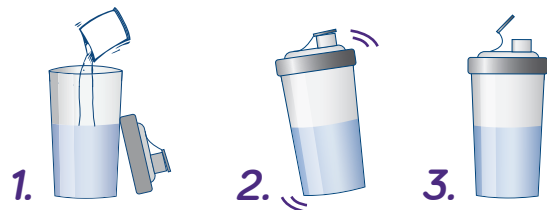
\*A source of docosahexaenoic acid (DHA)

**Vanilla:** Glycomacropeptide (Milk), Corn Syrup Solids, Sugar, Refined Vegetable Oils (Medium Chain Triglycerides (Coconut And/Or Palm Kernel), High Oleic Sunflower, Canola, Sunflower), Dextrin, L-Tyrosine, Tricalcium Phosphate, Glycine, Natural And Artificial Flavors, Magnesium Phosphate, L-Leucine, L-Histidine, L-Arginine, DHA Powder (Corn Syrup Solids, *C. Cohnii* Oil\*, Modified Corn Starch, Mannitol, High Oleic Sunflower Oil, Sodium Ascorbate, Mono- And Diglycerides, Sodium Polyphosphate, Tricalcium Phosphate, Natural Flavors, Mixed Tocopherols, Sunflower Lecithin, Ascorbyl Palmitate), Potassium Chloride, L-Cystine, Maltodextrin, Choline Bitartrate, Dicalcium Phosphate, L-Tryptophan, Citric Acid Esters Of Mono- And Diglycerides (CITREM), Potassium Citrate, Silicon Dioxide, Sodium Chloride, Ascorbyl Palmitate, Mixed Tocopherols, Ascorbic Acid, Taurine, Inositol, Vitamin E Acetate, Ferrous Sulfate, L-Carnitine, Sunflower Lecithin, Niacinamide, Zinc Oxide, Vitamin D<sub>3</sub>, Copper Gluconate, Vitamin A Palmitate, Calcium D-Pantothenate, Manganese Sulfate, D-Biotin, Beta-Carotene, Thiamine Hydrochloride, Pyridoxine Hydrochloride, Potassium Iodide, Riboflavin, Vitamin K<sub>1</sub>, Sodium Selenite, Folic Acid, Vitamin B<sub>12</sub>, Chromium Chloride, Sodium Molybdate.

**Contains: Milk.**

\*A source of docosahexaenoic acid (DHA)

## Mixing Instructions:



1. Simply add 33.3 g of powder (1 pouch or approx. 1 scoop) to approx. 5 - 6 fl oz (150 - 180 mL) of cold water. Dilution may be adjusted to taste.
2. Cover with a tight-fitting lid and shake until fully blended.
3. Enjoy immediately or store formula in a refrigerator for no more than 24 hours from time of preparation. Shake or stir prepared stored formula again before use.

**Do not heat, bake or add to food or beverages above 130°F.**

For greater accuracy use a gram scale.

## Storage:

Store unopened cans or pouches in a cool, dry place away from sunlight. Avoid extreme temperatures. Once a pouch is opened, entire contents should be used immediately. Once a can is opened, reseal with lid provided and use within one month.

## Important Notice:

Must only be used under medical supervision. For oral or tube feeding. Not for parenteral use. Not suitable as a sole source of nutrition. Only suitable for individuals over 1 year of age with proven phenylketonuria (PKU). Not suitable for individuals with a milk allergy.

