

PHENYLADE[®] GMP ULTRA

A low-phenylalanine, powdered medical food containing a balanced mix of glycomacropeptide (GMP), essential and non-essential amino acids, vitamins, minerals and trace elements as well as small amounts of carbohydrate and fat.



Indication: Phenylketonuria
Suitable for individuals over 3 years of age.

Nutrition Information:

Nutrients	Per 100 g of powder	Per pouch (33.4 g)
Calories (Lemonade/Vanilla/Plain)	306/318/322	102/106/108
Protein Equivalent, g	60.0	20.0
Phenylalanine, mg	108	36.0
Fat, g (Lemonade/Vanilla/Plain)	0.19/2.2/2.3	0.06/0.72/0.76
Carbohydrate, g (Lemonade/Vanilla/Plain)	16.2/14.7/15.3	5.4/4.9/5.1
Sugars, g (Lemonade/Vanilla/Plain)	8.1/7.8/6.0	2.7/2.6/1.9
Amino Acids, g		
L-Alanine	2.4	0.80
L-Arginine	3.0	1.0
L-Aspartic Acid	3.6	1.2
L-Cystine	1.7	0.57
L-Glutamic Acid	8.0	2.7
L-Glycine	0.42	0.14
L-Histidine	2.4	0.80
L-Isoleucine	4.4	1.5
L-Leucine	9.0	3.0
L-Lysine	2.6	0.86
L-Methionine	0.80	0.27
L-Phenylalanine	0.108	0.036
L-Proline	4.8	1.6
L-Serine	3.0	1.0
L-Threonine	6.8	2.3
L-Tryptophan	1.4	0.50
L-Tyrosine	6.0	2.0
L-Valine	5.2	1.7
L-Carnitine	0.09	0.03
Taurine	0.18	0.06

Vitamins	Per 100 g of powder	Per pouch (33.4 g)
Vitamin A, IU, mcg RAE	735	245
Vitamin A (from Vitamin A Acetate), mcg RAE	551	184
Vitamin A (from Beta-carotene), mcg RAE	184	61.3
Vitamin D ₃ , IU (mcg)	27.0	9.0
Vitamin E, IU (mg α-TE)	18.4	6.1
Vitamin K, mcg	86.4	28.9
Thiamine, mg	1.7	0.57
Riboflavin, mg	2.2	0.72
Vitamin B ₆ , mg	2.0	0.68
Vitamin B ₁₂ , mcg	4.3	1.4
Niacin, mg	18.0	6.0
Folic Acid, mcg	240	80.2
Dietary Folate Equivalents, mcg	400	134
Pantothenic Acid, mg	6.0	2.0
Biotin, mcg	43.2	14.4
Vitamin C, mg	86.4	28.9
Choline, mg	360	120
Inositol, mg	71.3	23.8
Minerals		
Calcium, mg	1318	440
Phosphorus, mg	1210	404
Magnesium, mg	315	105
Iron, mg	16.2	5.4
Zinc, mg	12.6	4.2
Manganese, mg	0.92	0.31
Copper, mcg	1478	494
Iodine, mcg	171	57.1
Molybdenum, mcg	66.6	22.2
Chromium, mcg	46.8	15.6
Selenium, mcg	66.6	22.2
Sodium, mg	1006	336
Potassium, mg	1428	477
Chloride, mg	720	241

Ordering/Reimbursement Information for PhenylAde® GMP ULTRA:

Product Code	Reimbursement Code	HCPCS Code*	Product Packaging	Calories Per Case
201719 - Vanilla	49735-0001-71	B4162 or B4157	16 x 33.4 g (1.2 oz)	1696
201718 - Lemonade	49735-0001-70	B4162 or B4157	16 x 33.4 g (1.2 oz)	1632
199951 - Plain	49735-0101-03	B4162 or B4157	16 x 33.4 g (1.2 oz)	1728

* S9435 = For individuals who submit their bills to insurance on their own.

Ingredients:

Lemonade: Glycomacropeptide (Milk), L-Leucine, Sugar, L-Tyrosine, Citric Acid, L-Arginine, Natural Flavor, Magnesium Hydrogen Phosphate, L-Histidine, Tricalcium Phosphate, L-Valine, L-Cystine, Corn Syrup Solids, L-Tryptophan, Dicalcium Phosphate, Potassium Chloride, Maltodextrin, Choline Bitartrate, Calcium Carbonate, Potassium Citrate, Sodium Chloride, Silicon Dioxide, Taurine, L-Ascorbic Acid, Sucralose, L-Carnitine, Inositol, Ferrous Sulfate, DL-Alpha Tocopheryl Acetate, Niacinamide, Zinc Oxide, Copper Gluconate, Calcium D-Pantothenate, Thiamine Hydrochloride, Manganese Sulfate, Pyridoxine Hydrochloride, Riboflavin, Vitamin A Palmitate, Sodium Selenite, Beta-Carotene, Sodium Molybdate, Potassium Iodide, Chromium Chloride, Folic Acid, Vitamin K₁, D-Biotin, Cholecalciferol, Vitamin B₁₂.

CONTAINS: MILK.

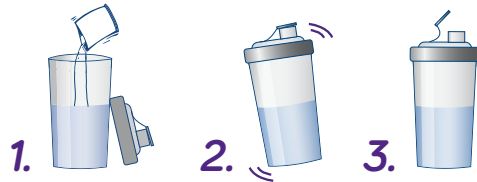
Vanilla: Glycomacropeptide (Milk), L-Leucine, Sugar, L-Tyrosine, Maltodextrin, L-Arginine, Magnesium Hydrogen Phosphate, L-Histidine, Artificial Flavors, Tricalcium Phosphate, Refined Vegetable Oils (Medium Chain Triglycerides [Coconut And/Or Palm Kernel], High Oleic Sunflower, Canola, Sunflower), L-Valine, L-Cystine, L-Tryptophan, Dicalcium Phosphate, Potassium Chloride, Choline Bitartrate, Calcium Carbonate, Potassium Citrate, Sodium Chloride, Silicon Dioxide, Taurine, L-Ascorbic Acid, L-Carnitine, Citric Acid Esters Of Mono- And Diglycerides, Inositol, Ferrous Sulfate, Sucralose, DL-Alpha Tocopheryl Acetate, Nicotinamide, Zinc Oxide, Copper Gluconate, Calcium D-Pantothenate, Sunflower Lecithin, Thiamine Hydrochloride, Manganese Sulfate, Pyridoxine Hydrochloride, Riboflavin, Vitamin A Palmitate, Sodium Selenite, Beta-Carotene, Ascorbyl Palmitate, Sodium Molybdate, Potassium Iodide, Chromium Chloride, Folic Acid, Vitamin K₁, D-Biotin, Cholecalciferol, Vitamin B₁₂.

CONTAINS: MILK.

Plain: Glycomacropeptide (Milk), L-Leucine, Corn Syrup Solids, L-Tyrosine, Sugar, Tricalcium Phosphate, L-Arginine, Magnesium Hydrogen Phosphate, L-Histidine, Refined Vegetable Oils (Medium Chain Triglycerides (Coconut and/or Palm Kernel Oil), High Oleic Sunflower, Canola, Sunflower), Maltodextrin, L-Valine, L-Cystine, L-Tryptophan, Potassium Chloride, Choline Bitartrate, Potassium Citrate, Sodium Chloride, Silicon-Dioxide, Taurine, L-Ascorbic Acid, L-Carnitine, Citric Acid Esters Of Mono- And Diglycerides of Fatty Acids, Inositol, Ferrous Sulfate, Zinc Sulfate, DL-Alpha Tocopheryl Acetate, Natural and Artificial Flavors, Nicotinamide, Sucralose, Calcium D-Pantothenate, Sunflower Lecithin, Copper Sulfate, Manganese Sulfate, Pyridoxine Hydrochloride, Riboflavin, Thiamine Hydrochloride, Vitamin A Acetate, Beta-Carotene, Ascorbyl Palmitate, Folic Acid, Potassium Iodide, Chromium Chloride, Sodium Molybdate, Sodium Selenite, Vitamin K₁, D-Biotin, Cholecalciferol, Vitamin B₁₂.

CONTAINS: MILK.

Directions for Use:



1. Simply add 1 pouch (33.4 g) to approx. 6 fl oz (180 mL) of water. Dilution may be adjusted to taste.
2. Cover with a tight-fitting lid and shake until fully blended.
3. Enjoy immediately or store formula in a refrigerator for no more than 24 hours from time of preparation. Shake or stir prepared formula again before use.

Do not heat, bake or add to food or beverages above 130°F.

Storage:

Store unopened pouches at room temperature away from sunlight. Avoid extreme temperatures. Once opened, entire contents of pouch should be used immediately.

Important Notice:

Must only be used under medical supervision. For oral or tube feeding. Not for parenteral use. Not suitable as a sole source of nutrition. Only suitable for individuals over 3 years of age with proven phenylketonuria (PKU). Not suitable for individuals with a milk allergy.

